

ITGA2 Antibody (C-term)
Affinity Purified Rabbit Polyclonal Antibody (Pab)
Catalog # AP17907b**Specification**

ITGA2 Antibody (C-term) - Product Information

Application	WB,E
Primary Accession	P17301
Other Accession	NP_002194.2
Reactivity	Human, Mouse
Host	Rabbit
Clonality	Polyclonal
Isotype	Rabbit IgG
Calculated MW	129296
Antigen Region	1152-1180

ITGA2 Antibody (C-term) - Additional Information**Gene ID** 3673**Other Names**

Integrin alpha-2, CD49 antigen-like family member B, Collagen receptor, Platelet membrane glycoprotein Ia, GPIa, VLA-2 subunit alpha, CD49b, ITGA2, CD49B

Target/Specificity

This ITGA2 antibody is generated from rabbits immunized with a KLH conjugated synthetic peptide between 1152-1180 amino acids from the C-terminal region of human ITGA2.

Dilution

WB~~1:1000

E~~Use at an assay dependent concentration.

Format

Purified polyclonal antibody supplied in PBS with 0.09% (W/V) sodium azide. This antibody is purified through a protein A column, followed by peptide affinity purification.

Storage

Maintain refrigerated at 2-8°C for up to 2 weeks. For long term storage store at -20°C in small aliquots to prevent freeze-thaw cycles.

Precautions

ITGA2 Antibody (C-term) is for research use only and not for use in diagnostic or therapeutic procedures.

ITGA2 Antibody (C-term) - Protein Information**Name** ITGA2

Synonyms CD49B

Function Integrin alpha-2/beta-1 is a receptor for laminin, collagen, collagen C-propeptides, fibronectin and E-cadherin. It recognizes the proline-hydroxylated sequence G-F-P-G-E-R in collagen. It is responsible for adhesion of platelets and other cells to collagens, modulation of collagen and collagenase gene expression, force generation and organization of newly synthesized extracellular matrix. (Microbial infection) Integrin ITGA2:ITGB1 acts as a receptor for Human echoviruses 1 and 8.

Cellular Location

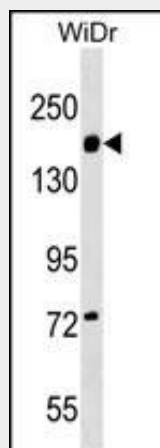
Membrane; Single-pass type I membrane protein.

ITGA2 Antibody (C-term) - Protocols

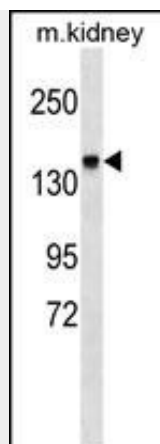
Provided below are standard protocols that you may find useful for product applications.

- [Western Blot](#)
- [Blocking Peptides](#)
- [Dot Blot](#)
- [Immunohistochemistry](#)
- [Immunofluorescence](#)
- [Immunoprecipitation](#)
- [Flow Cytometry](#)
- [Cell Culture](#)

ITGA2 Antibody (C-term) - Images



ITGA2 Antibody (C-term) (Cat. #AP17907b) western blot analysis in WiDr cell line lysates (35ug/lane). This demonstrates the ITGA2 antibody detected the ITGA2 protein (arrow).



ITGA2 Antibody (C-term) (Cat. #AP17907b) western blot analysis in mouse kidney tissue lysates (35ug/lane). This demonstrates the ITGA2 antibody detected the ITGA2 protein (arrow).

ITGA2 Antibody (C-term) - Background

This gene product belongs to the integrin alpha chain family. Integrins are heterodimeric integral membrane glycoproteins composed of a distinct alpha chain and a common beta chain. They are found on a wide variety of cell types including, T cells, fibroblasts and platelets. Integrins are involved in cell adhesion and also participate in cell-surface mediated signalling. [provided by RefSeq].

ITGA2 Antibody (C-term) - References

Nie, Y.M., et al. Transfus Med 20(6):376-382(2010)
Motovska, Z., et al. Atherosclerosis 212(2):548-552(2010)
Bailey, S.D., et al. Diabetes Care 33(10):2250-2253(2010)
Hozumi, K., et al. FEBS Lett. 584(15):3381-3385(2010)
Wang, Y., et al. Diabet. Med. 27(4):376-383(2010)